



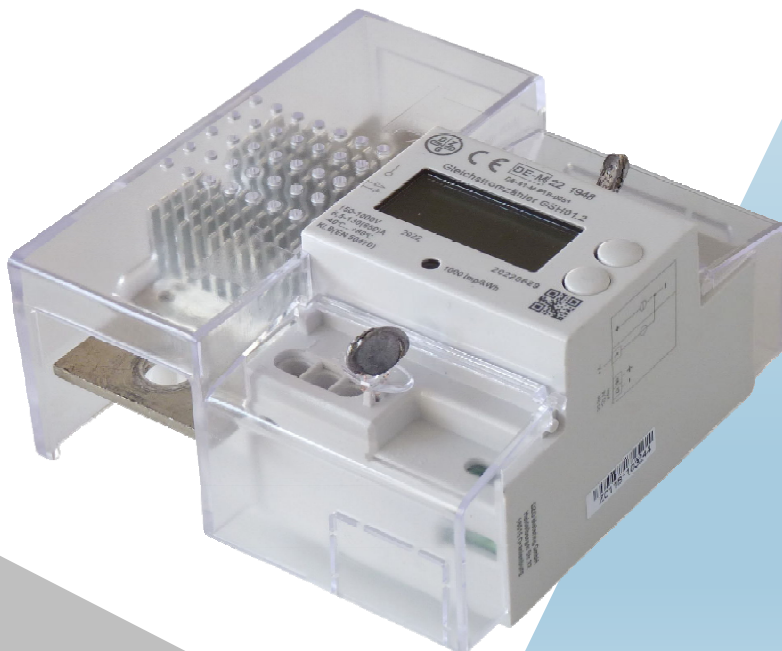
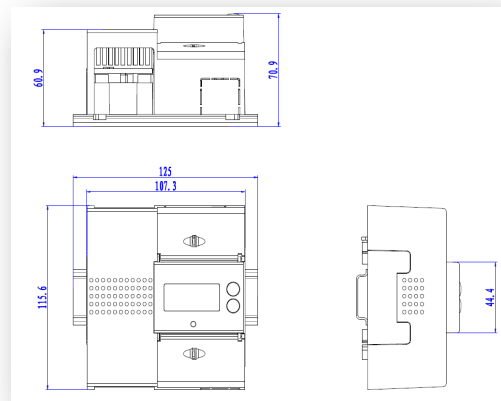
DZG Metering GmbH

GSH01 DC ELECTRONIC METER

Main Features :

- Mains Energy, Device Energy, Line Loss Energy Measurement
- Single or Bidirectional Energy Directions Configurable
- Support OCMF communication protocol
- Suitable For DC E-mobility Charging Stations & Any Sub-billing Applications
- PTB & IEC Certificates

Overall dimensions(mm)



Specification GSH01



DZG Metering GmbH

Type DC Electronic Meter

Standards EN 50470-1, EN 50470-3, IEC 62052-41

Voltage

U_{max} 1000V

U_{min} 150V

Current

Minimum current I_{min} 6.5A

Reference current I_b 130A

Maximum current I_{max} 650A

Starting current I_{st} 0.4%I_b

Accuracy Class B

Pulsating Indicator LED

Pulsating (meter constant) 1000imp/kWh

Environment

Temperature range Operation: -40~80°C

Storage: -40~85°C

Portection Degree IP 51 in protective enclosure

Insulation Class II

Typical Power Consumption

Voltage circuit power at U_n < 0.5W

Current circuit power at I_{max} < 0.04W/A*I_{max}

LCD Display Dot Matrix type, backlight supported

Auxiliary Power Supply 9Vdc ~ 36Vdc

Communication Interface 3*RS485 port, upto 115200bps

Weight Of Meter About 0.5kg

Dimension(LxWxD) 115.6 x 107.3 x 70.9mm